



## **CONTACT INFORMATION**

Mining Records Curator  
Arizona Geological Survey  
1520 West Adams St.  
Phoenix, AZ 85007  
602-771-1601  
<http://www.azgs.az.gov>  
[inquiries@azgs.az.gov](mailto:inquiries@azgs.az.gov)

The following file is part of the

Arizona Department of Mines and Mineral Resources Mining Collection

## **ACCESS STATEMENT**

These digitized collections are accessible for purposes of education and research. We have indicated what we know about copyright and rights of privacy, publicity, or trademark. Due to the nature of archival collections, we are not always able to identify this information. We are eager to hear from any rights owners, so that we may obtain accurate information. Upon request, we will remove material from public view while we address a rights issue.

## **CONSTRAINTS STATEMENT**

The Arizona Geological Survey does not claim to control all rights for all materials in its collection. These rights include, but are not limited to: copyright, privacy rights, and cultural protection rights. The User hereby assumes all responsibility for obtaining any rights to use the material in excess of "fair use."

The Survey makes no intellectual property claims to the products created by individual authors in the manuscript collections, except when the author deeded those rights to the Survey or when those authors were employed by the State of Arizona and created intellectual products as a function of their official duties. The Survey does maintain property rights to the physical and digital representations of the works.

## **QUALITY STATEMENT**

The Arizona Geological Survey is not responsible for the accuracy of the records, information, or opinions that may be contained in the files. The Survey collects, catalogs, and archives data on mineral properties regardless of its views of the veracity or accuracy of those data.

PRINTED: 05-24-2006

ARIZONA DEPARTMENT OF MINES AND MINERAL RESOURCES AZMILS DATA

PRIMARY NAME: ADAMS GYPSUM

ALTERNATE NAMES:

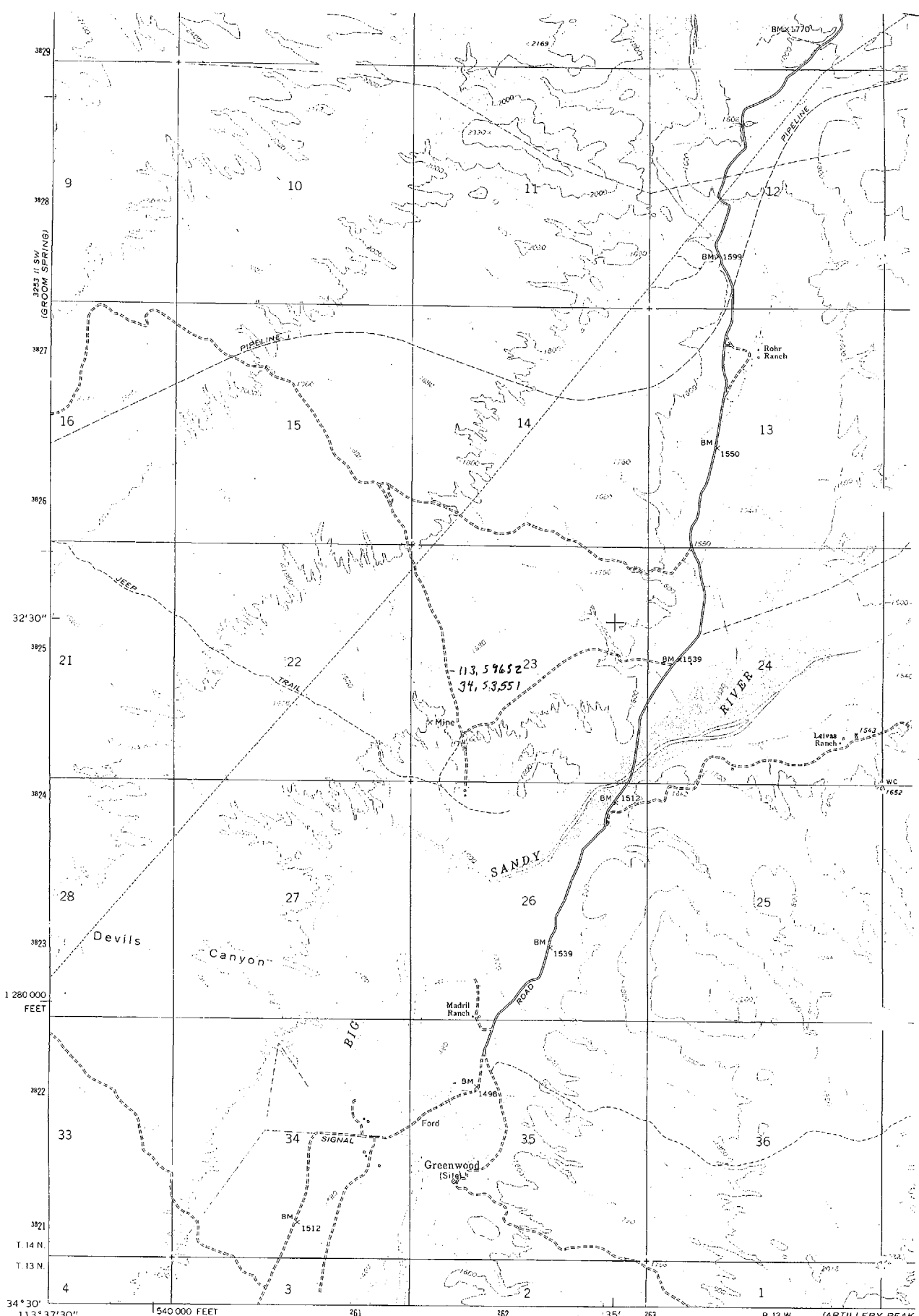
MOHAVE COUNTY MILS NUMBER: 760

LOCATION: TOWNSHIP 14 N RANGE 13 W SECTION 13 QUARTER C  
LATITUDE: N 34DEG 33MIN 15SEC LONGITUDE: W 113DEG 34MIN 20SEC  
TOPO MAP NAME: GREENWOOD PEAK - 7.5 MIN

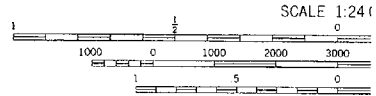
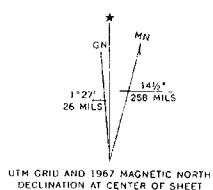
CURRENT STATUS: RAW PROSPECT

COMMODITY:  
GYPSUM

BIBLIOGRAPHY:  
ADMMR ADAMS GYPSUM FILE  
AZBM BULL 180 P. 378  
EXACT LOCATION IS UNCERTAIN



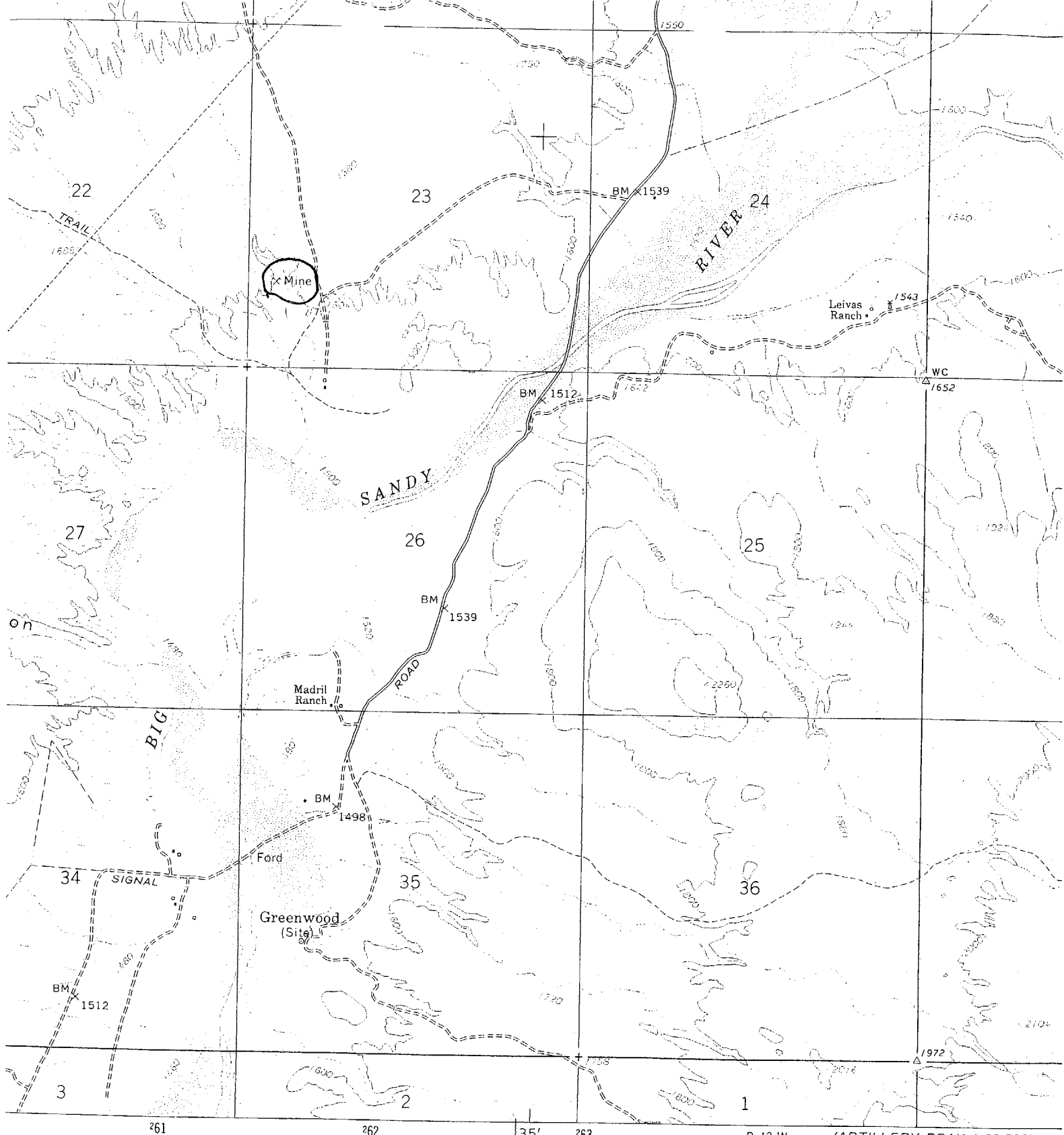
Mapped, edited, and published by the Geological Survey  
 Control by USGS and USC&GS  
 Topography by photogrammetric methods from aerial  
 photographs taken 1966. Field checked 1967  
 Polyconic projection. 1927 North American datum  
 10,000-foot grid based on Arizona coordinate system, west zone  
 1000-meter Universal Transverse Mercator grid ticks,  
 zone 12, shown in blue  
 Fine red dashed lines indicate selected fence lines



SCALE 1:24000  
 CONTOUR INTERVAL  
 DOTTED LINES REPRESENT 2  
 NATIONAL GEODETIC VERTIC

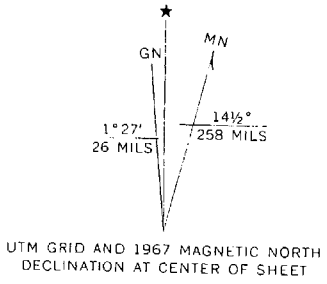
THIS MAP COMPLIES WITH NATIONAL  
 FOR SALE BY U. S. GEOLOGICAL SURVEY, DENVER, COL  
 A FOLDER DESCRIBING TOPOGRAPHIC MAPS AND

2551  
 1682 900  
 ARTILLERY PEAK



Geological Survey

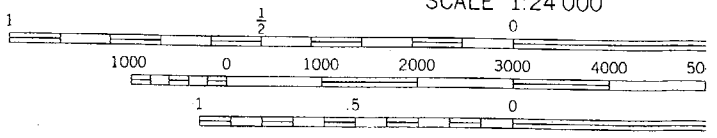
From aerial  
1967  
in datum  
state system, west zone  
grid ticks,  
e lines



UTM GRID AND 1967 MAGNETIC NORTH DECLINATION AT CENTER OF SHEET

R. 13 W. (ARTILLERY PEAK 1:62 500) R. 1

SCALE 1:24 000

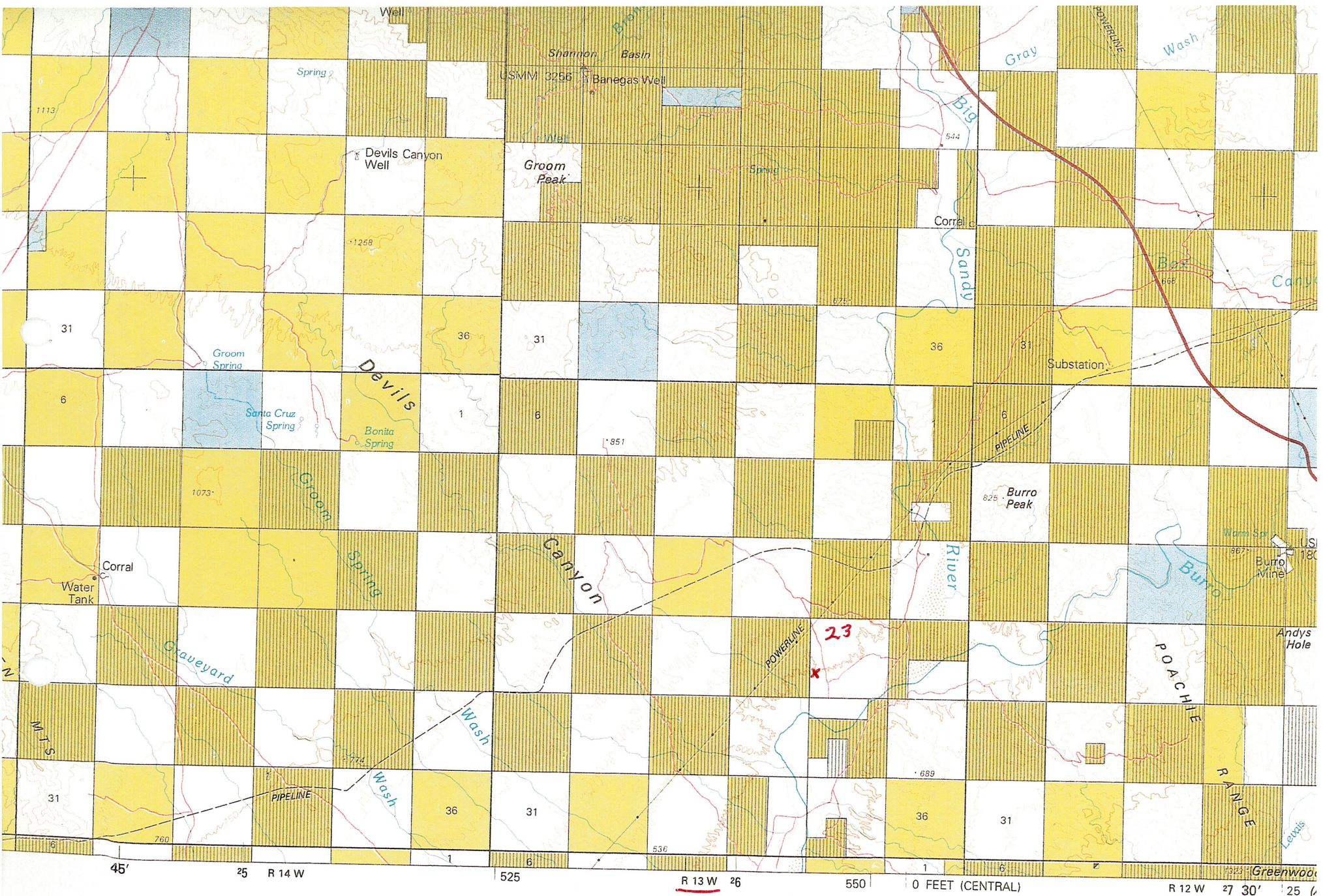


CONTOUR INTERVAL 40 FEET  
DOTTED LINES REPRESENT 20-FOOT CONTOURS  
NATIONAL GEODETIC VERTICAL DATUM OF 1988

# GREENWOOD PEAK

THIS MAP COMPLIES WITH NATIONAL MAP ACCURACY STANDARDS





T  
14  
N



BAG DAD



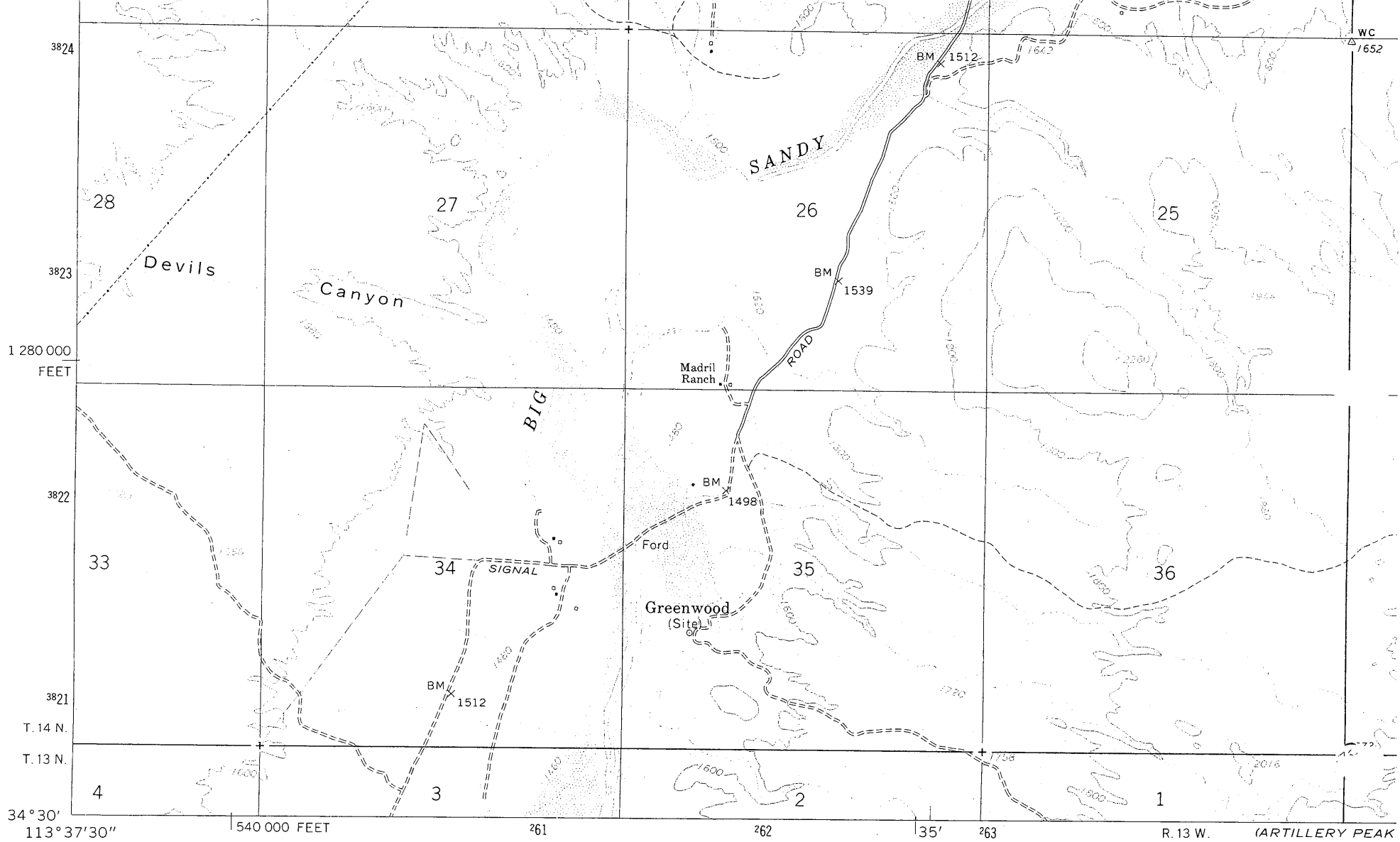


TABLE 31.—Gypsum mines and occurrences in Arizona—Continued

| Locality No. in fig. 57 | Locality or mine name | Location  | Description   | Remarks  | References   |
|-------------------------|-----------------------|---|---|--|--|
| 21                      | San Carlos            | Sec. 16, T. 1 S., R. 18 E., Gila County, 3 mi W. of San Carlos in San Carlos Indian Reservation.          | Three to five, white, granular gypsum beds, 2-10 ft thick, in 100-150-ft-thick exposure of Cenozoic mudstone, siltstone and sandstone. Gypsum includes seams and pockets of clay; deposit covered by variable thicknesses of overburden. Grade fair to good. Gypsum beds may extend through 9-acre area and contain 100,000 tons of available gypsum. | Mined on a small scale for local use.                      | Bromfield and Shride, 1956, p. 681-683.                        |
| 22                      | Black Gap             | T. 7 and 8 S., R. 5 W., Maricopa County, 15 mi S. of Gila Bend on NW. slope of Saucedo Mts.               | Gypsum with associated celestite, (strontium sulfate) interbedded in tuffs in 40-50-ft-thick zone in Cenozoic sandstones and conglomerates. Outcrop extends about 1 mi. Probably low grade.   | Examined as source of strontium.                           | Phalen, 1914, p. 131-133; Moore, 1936, p. 154.                 |
| 23                      | Holiday               | T. 7 N., R. 6 E., Maricopa County, by Verde River.  | Probably in Cenozoic lake bed deposit. Grade and extent unknown.  | Undeveloped.   | Ariz. Dept. Mineral Resources, 1963.                           |
| 24                      | Cave Creek            | Approx. secs. 21 and 28, T. 8 N., R. 6 E., Maricopa County. Near Horseshoe Dam.                           | do.   | do.  | Do.  |
| 25                      | Blue Moon             | Secs. 25 and 26, T. 6 N., R. 17 W., Yuma County. 10 mi SW. of Bouse near Mundersback mine in Plomosa Mts. | Gypsum bed, several feet thick, exposed for several hundred feet in Permian limestone. Grade and extent unknown.  | Few tons sold for local agricultural use.                  | Bancroft, 1911, p. 91-92; Ariz. Dept. Mineral Resources, 1963. |
| 26                      | Adams                 | Approx. T. 14 N., R. 13 W., Mohave County. Near Wickieup in Big Sandy R. Valley.                          | Probably local Cenozoic lake bed deposit. Grade and extent unknown.   | Undeveloped.   | Ariz. Dept. Mineral Resources, 1963.                           |
| 27                      | Wingfield             | Approx. sec. 22, T. 13 N., R. 5 E., Yavapai County. S. of Camp Verde.                                     | Probably in Verde Fm (Cenozoic) lakebed associated with other salines in mudstone.  | do.  | Do.  |
| 28                      | Camp Verde            | Approx. T. 14 N., R. 6 E., Yavapai County. 6 mi E. of Camp Verde.   | Gypsum beds probably in lakebeds of Verde Formation (Cenozoic).   | do.  | McCrorry and O'Haire, 1965.                                    |
| 29                      | Snowflake             | T. 13 N., Rs. 21-22 E., Navajo County, near Snowflake.  | Probably local lake bed gypsum deposit in Moenkopi Fm. of Triassic age.   | Reported developed and possibly exploited in early 1900's. | Stone, 1920, p. 51-52.   |

Arizona Department of Geology & Earth Resources (post 1982)

|   |                            |                      |                                   |               |
|---|----------------------------|----------------------|-----------------------------------|---------------|
| Name of Mine or Prospect:<br>Adams Gypsum   | Township<br>14N            | Range<br>13W         | Section<br>23 ccb                 | Priority<br>B |
| Principal Minerals:<br>Gypsum   | 1:250,000 Quad<br>Prescott |                      | 7.5' - 15' Quad<br>Greenwood Peak |               |
| Associated Minerals:  | District<br>Greenwood      |                      | Principal Product<br>Gypsum       |               |
| Type of Operation:<br>Surface   | County<br>Mohave           | State<br>Ar.         | Type of Deposit<br>Sedimentary    |               |
| Ownership or Controlling Interest:<br>Thad R. Adams 2602½ Merced Ave., El Monte Ca. (no date)   |                            |                      |                                   |               |
| Access: From U.S. 93, proceed west on the Signal Road for 5 miles, turn right on jeep trail and proceed 1 mile to mine.   |                            |                      |                                   |               |
| Structural Control or Geological Association:<br>"Lake bed deposition, between bedding planes, gypsum occurs, thickness varies from a few inches to 1.5 feet." <sup>1</sup><br>"Probably local Cenozoic lake bed deposit, grade & extent unknown." <sup>2</sup> |                            |                      |                                   |               |
| Age of Mineralization: Cenozoic <sup>2</sup> (?)  |                            |                      |                                   |               |
| Production History  |                            | Geochemical Analyses |                                   |               |
| New discovery 1958 <sup>1</sup>   |                            |                      |                                   |               |
| References  |                            |                      |                                   |               |
| 1) ADMR files, Phoenix, Ar.<br>2) ABM (1969) Bull. 180, p. 378.   |                            |                      |                                   |               |



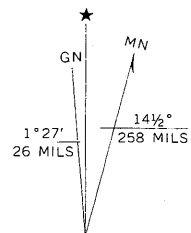
Mapped, edited, and published by the Geological Survey

Control by USGS and USC&GS

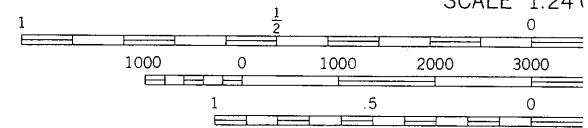
Topography by photogrammetric methods from aerial photographs taken 1966. Field checked 1967

Polyconic projection. 1927 North American datum  
 10,000-foot grid based on Arizona coordinate system, west zone  
 1000-meter Universal Transverse Mercator grid ticks,  
 zone 12, shown in blue

Fine red dashed lines indicate selected fence lines



UTM GRID AND 1967 MAGNETIC NORTH DECLINATION AT CENTER OF SHEET



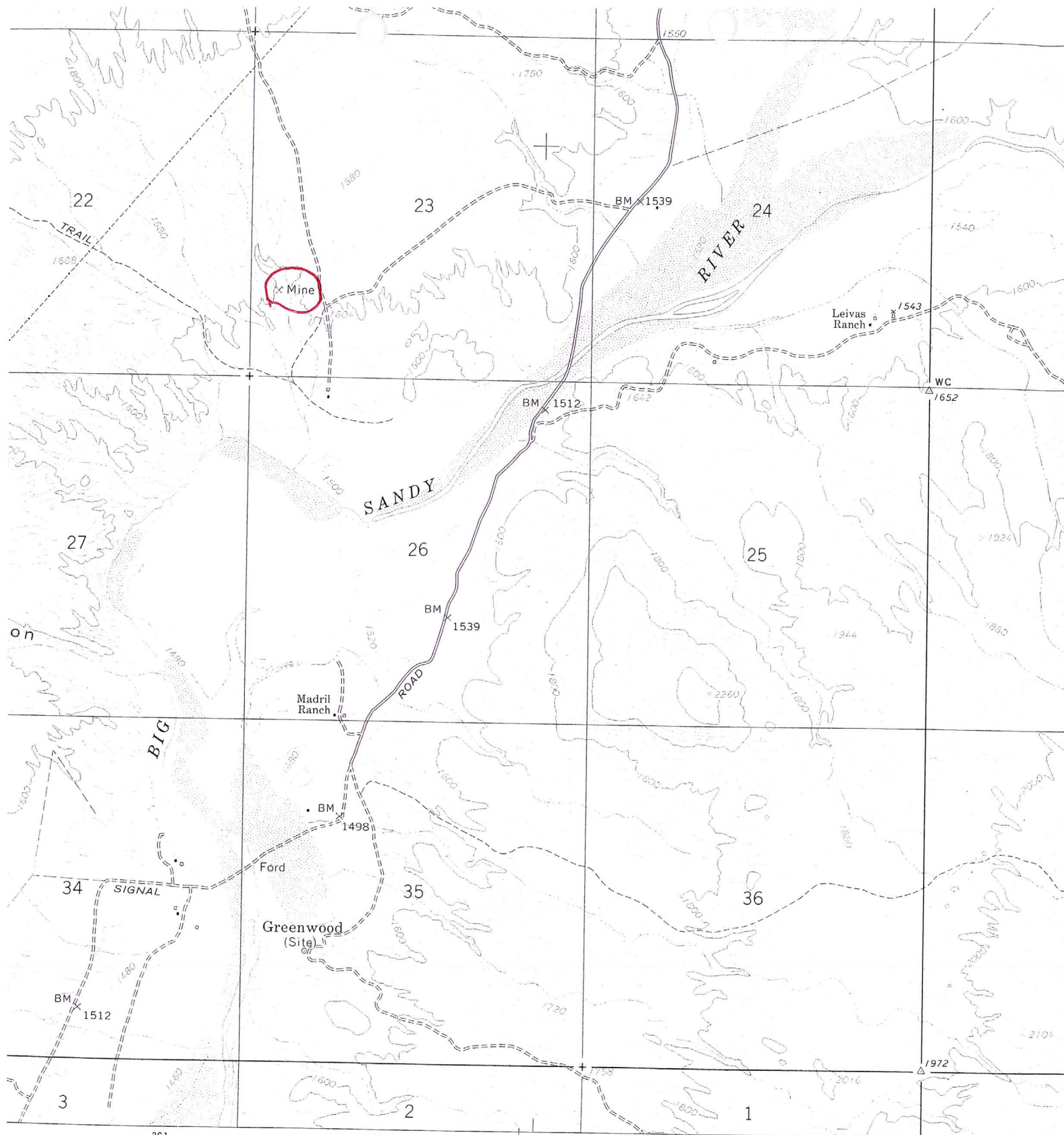
SCALE 1:24,000

CONTOUR INTERVAL 20 FEET  
 DOTTED LINES REPRESENT 200-FOOT NATIONAL GEODETIC VERTICAL

THIS MAP COMPLIES WITH NATIONAL MAP ACT FOR SALE BY U. S. GEOLOGICAL SURVEY, DENVER, COL  
 A FOLDER DESCRIBING TOPOGRAPHIC MAPS AND

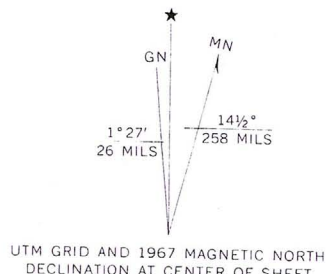
3252 I  
 (ARTILLERY PEAK)  
 1:62,500





Geological Survey

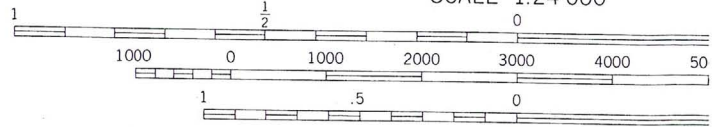
from aerial 967  
 in datum  
 site system, west zone  
 grid ticks,  
 e lines



UTM GRID AND 1967 MAGNETIC NORTH DECLINATION AT CENTER OF SHEET

R. 13 W. (ARTILLERY PEAK 1:62 500) R. 1.  
 3252 I

SCALE 1:24 000



CONTOUR INTERVAL 40 FEET  
 DOTTED LINES REPRESENT 20-FOOT CONTOUR INTERVAL  
 NATIONAL GEODETIC VERTICAL DATUM OF 1983

# GREENWOOD PEAK

THIS MAP COMPLIES WITH NATIONAL MAP ACCURACY STANDARDS

15

**DEPARTMENT OF MINERAL RESOURCES**  
**State of Arizona**  
**MINE OWNER'S REPORT**

Date 1-21-58

✓ **Adams**

**Gypsum**

1. Mine:.....

2. Location: Sec..... Twp. 14N Range 13W Nearest Town Wickenburg Distance.....

Direction..... Nearest R.R..... Distance.....

Road Conditions Rough

3. Mining District and County: Mohave County

4. Former Name of Mine:.....

5. Owner: Thad R Adams, 2602 1/2 Hoped Avenue

Address: El Monte California

6. Operator: ✓ Harry Meek <sup>MEEK</sup> Box 612, Wickenburg, Arizona.

Address:.....

7. Principal Minerals: ✓ Gypsum

8. Number of Claims: Lode..... Patented..... Unpatented.....

Placer 10 Patented..... Unpatented ✓

9. Type of Surrounding Terrain: Rough mountain side.

10. Geology and Mineralization: Lake Bed deposition between deposition  
Bed = Few inches up to 1 1/2 feet

11. Dimension and Value of Ore Body: Not Known

Please give as complete information as possible and attach copies of engineer's reports, shipment returns, maps, etc. if you wish to have them available in this Department's files for inspection by prospective lessors or buyers.

12. Ore "Blocked Out" "In Sight": *Not Kno*

Ore Probable: *Looks large*

13. Mine Workings—Amount and Condition:

| No.       | Feet      | Condition |
|-----------|-----------|-----------|
| Shafts    | <i>no</i> |           |
| Raises    | <i>✓</i>  |           |
| Tunnels   | <i>✓</i>  |           |
| Crosscuts | <i>✓</i>  |           |
| Stopes    | <i>✓</i>  |           |

14. Water Supply: *Big Sandy nearest water*

15. Brief History: *New Deposit*

16. Remarks:

17. If Property for Sale, List Approximate Price and Terms: *Want 10% royalty.*  
*no former record.*

18. Signature: *Shad R. Adams*