



CONTACT INFORMATION

Mining Records Curator
Arizona Geological Survey
1520 West Adams St.
Phoenix, AZ 85007
602-771-1601
<http://www.azgs.az.gov>
inquiries@azgs.az.gov

The following file is part of the

Arizona Department of Mines and Mineral Resources Mining Collection

ACCESS STATEMENT

These digitized collections are accessible for purposes of education and research. We have indicated what we know about copyright and rights of privacy, publicity, or trademark. Due to the nature of archival collections, we are not always able to identify this information. We are eager to hear from any rights owners, so that we may obtain accurate information. Upon request, we will remove material from public view while we address a rights issue.

CONSTRAINTS STATEMENT

The Arizona Geological Survey does not claim to control all rights for all materials in its collection. These rights include, but are not limited to: copyright, privacy rights, and cultural protection rights. The User hereby assumes all responsibility for obtaining any rights to use the material in excess of "fair use."

The Survey makes no intellectual property claims to the products created by individual authors in the manuscript collections, except when the author deeded those rights to the Survey or when those authors were employed by the State of Arizona and created intellectual products as a function of their official duties. The Survey does maintain property rights to the physical and digital representations of the works.

QUALITY STATEMENT

The Arizona Geological Survey is not responsible for the accuracy of the records, information, or opinions that may be contained in the files. The Survey collects, catalogs, and archives data on mineral properties regardless of its views of the veracity or accuracy of those data.

.05/09/96

ARIZONA DEPARTMENT OF MINES AND MINERAL RESOURCES FILE DATA

PRIMARY NAME: ADAMS

ALTERNATE NAMES:

WOODS
EUREKA GOLD AND COPPER
PATENTED CLAIMS MS 3143

YAVAPAI COUNTY MILS NUMBER: 1390

LOCATION: TOWNSHIP 15 N RANGE 2.5E SECTION 25 QUARTER C
LATITUDE: N 34DEG 39MIN 07SEC LONGITUDE: W 112DEG 05MIN 22SEC
TOPO MAP NAME: COTTONWOOD - 7.5 MIN

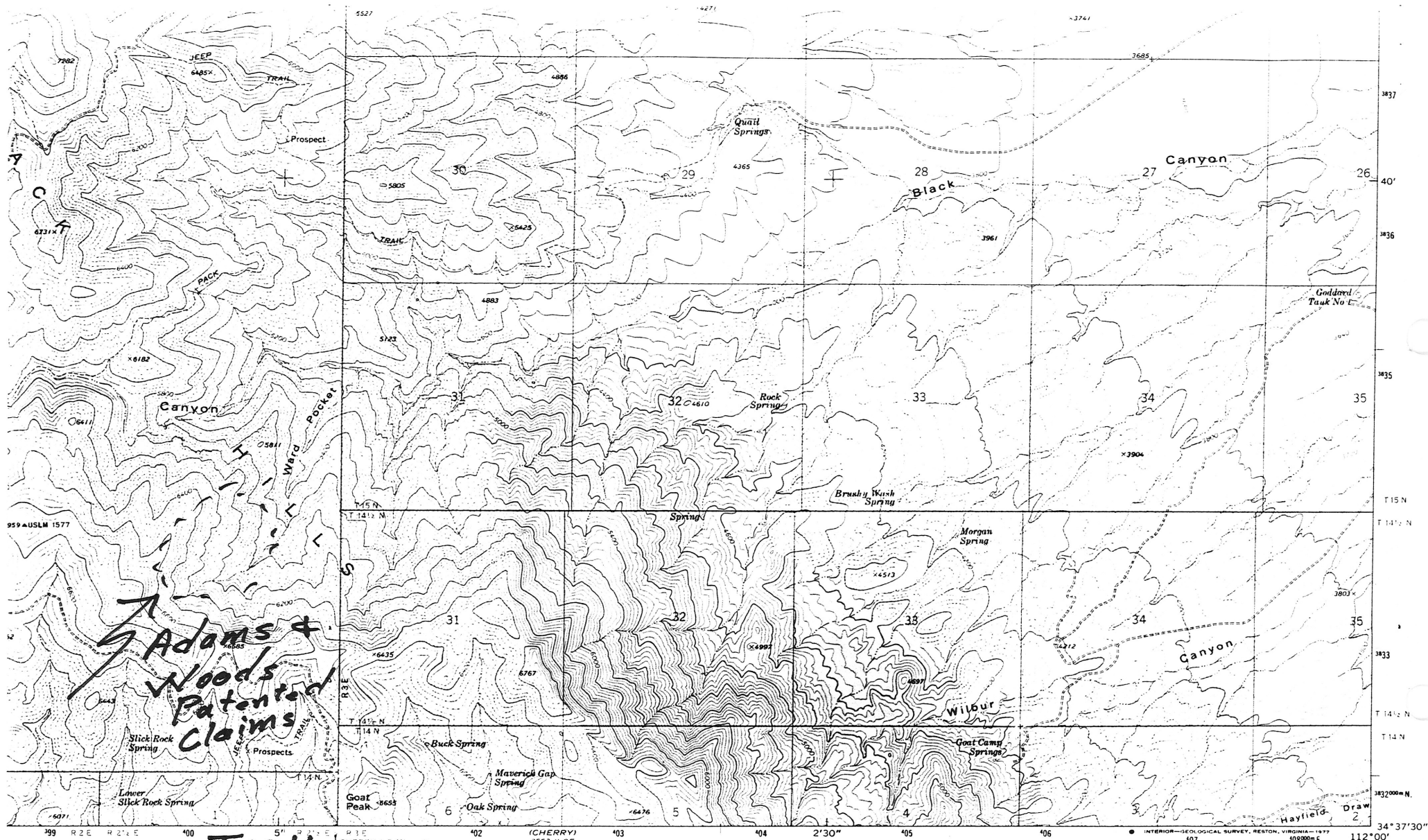
CURRENT STATUS: EXP PROSPECT

COMMODITY:

COPPER SULFIDE
GOLD GOLD

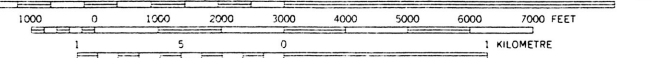
BIBLIOGRAPHY:

ADMMR ADAMS MINE FILE
WEED, W.H., 1916, THE MINES HANDBOOK AND COPPER
HANDBOOK, NEW YORK, NY, VOL. 12, P. 484
ADMMR EUREKA GOLD & COPPER MINING CO. CARD
BLM MINING DISTRICT MAP 68



Sec. 25 T15N, R 2.5E.

SCALE 1:24 000



CONTOUR INTERVAL 40 FEET
NATIONAL GEODETIC VERTICAL DATUM OF 1929



ROAD CLASSIFICATION

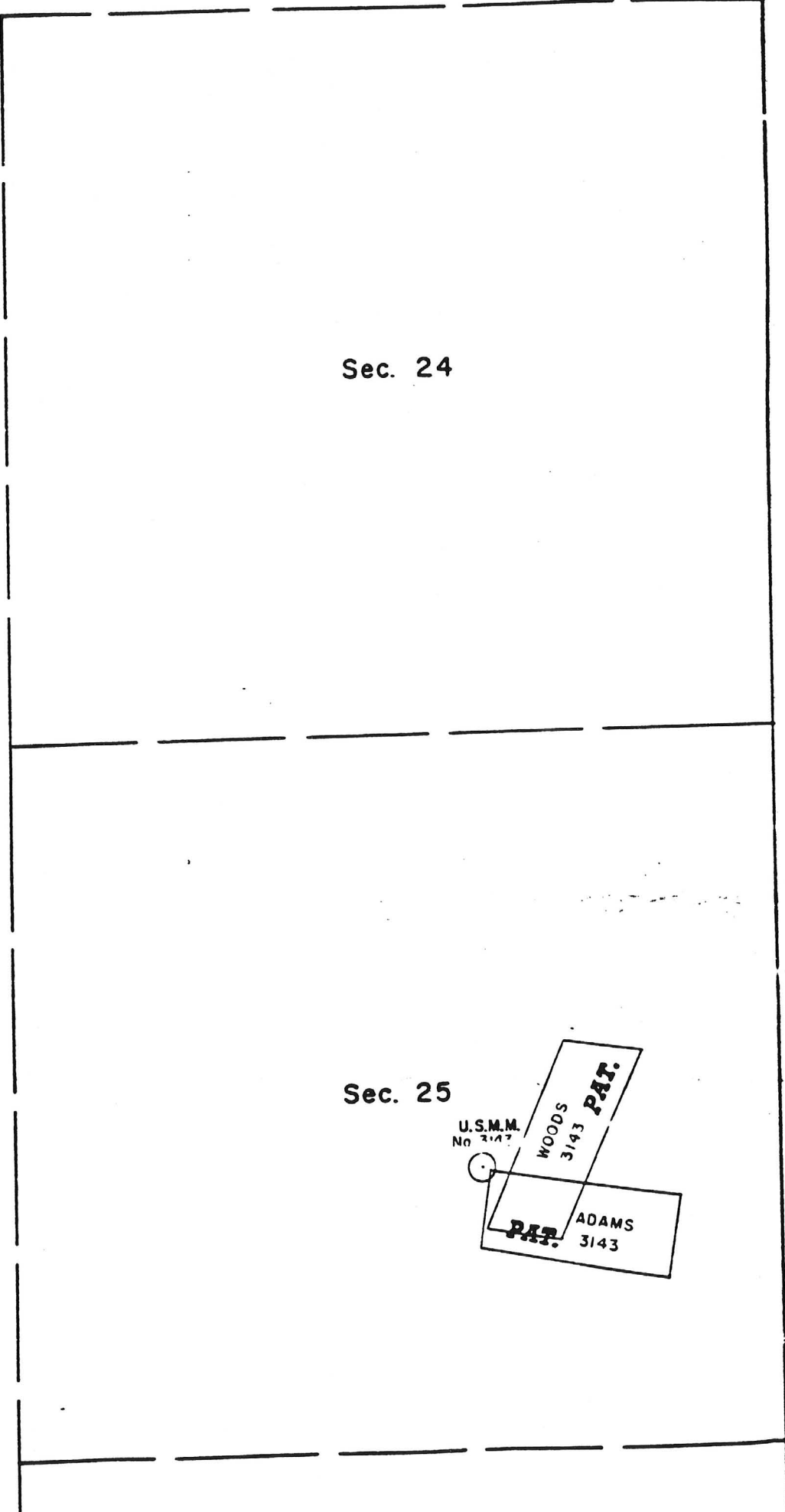
Primary highway, hard surface	Light-duty road, hard or improved surface
Secondary highway, hard surface	Unimproved road
Interstate Route	U. S. Route
	State Route

COTTONWOOD, ARIZ.

MIDDLE VERGE
3/25/11 SW

68

S 1/2, T. 15 N., R. 2 1/2 E.
VERDE DIST.



Sec. 24

Sec. 25

U.S.M.M.
No 3143

WOODS
3143

PAT.

PAT.

ADAMS
3143

Claims Located April 8, 1901

Mineral Survey No. 3143

Lot No. Arizona Land District.

PLAT

OF THE CLAIM OF

Eureka Gold and Copper Mining Company
KNOWN AS THE

Woods, Adams

IN Verde MINING DISTRICT,
Yavapai COUNTY, Arizona

Containing an Area of 32.924 Acres.

Scale of 200 Feet to the inch.

Variation 15° E.

SURVEYED August 8-14, 1914 BY

Lloyd G. Gage U.S. Deputy Mineral Surveyor;

The Original Field Notes of the Survey of the Mining Claim of
Eureka Gold and Copper Mining Company
known as the

Woods, Adams

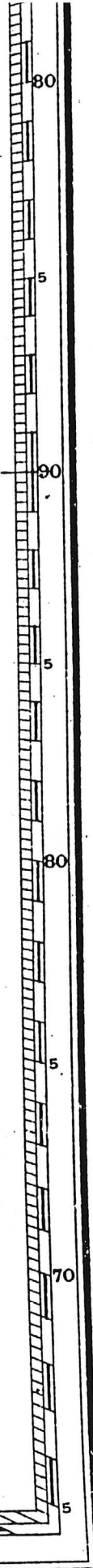
from which this plat has been made under my direction,
have been examined and approved, and are on file in this Office,
and I hereby certify that they furnish such an accurate descrip-
tion of said Mining Claim as will, if incorporated into a patent,
serve fully to identify the premises, and that such reference is
made therein to natural objects or permanent monuments as
will perpetuate and fix the locus thereof.

I further certify that Five Hundred Dollars worth of labor has
been expended or improvements made upon ^{each of} said Mining Claims
by claimant or its grantors and that
said improvements consist of 2 shafts, 3 funnels, 3 cuts,
4 drifts and 1 winze, total value \$9190.00

of deposited \$45.00
of 07/23 41.50
be refunded 3.50

of with
survey 5997 Acres

dict with
survey 5997 Acres



Yavapai COUNTY, ARIZONA
Containing an Area of 32.924 Acres.
Scale of 200 Feet to the inch.
Variation 15° E.
SURVEYED August 8-14, 1914 BY
Lloyd G. Gage, U.S. Deputy Mineral Surveyor;

The Original Field Notes of the Survey of the Mining Claim of
Eureka Gold and Copper Mining Company
known as the
Woods, Adams

from which this plat has been made under my direction,
have been examined and approved, and are on file in this Office,
and I hereby certify that they furnish such an accurate descrip-
tion of said Mining Claim as will, if incorporated into a patent,
serve fully to identify the premises, and that such reference is
made therein to natural objects or permanent monuments as
will perpetuate and fix the locus thereof.

I further certify that Five Hundred Dollars worth of labor has
been expended or improvements made upon ^{each of} said Mining Claims
by claimant or its grantors and that
said improvements consist of 2 shafts, 3 funnels, 3 cuts,
4 drifts and 1 winze, total value \$9190.00

that the location of said improvements is correctly shown
upon this plat, and that no portion of said labor or improve-
ments has been included in the estimate of expenditures
upon any other claim.

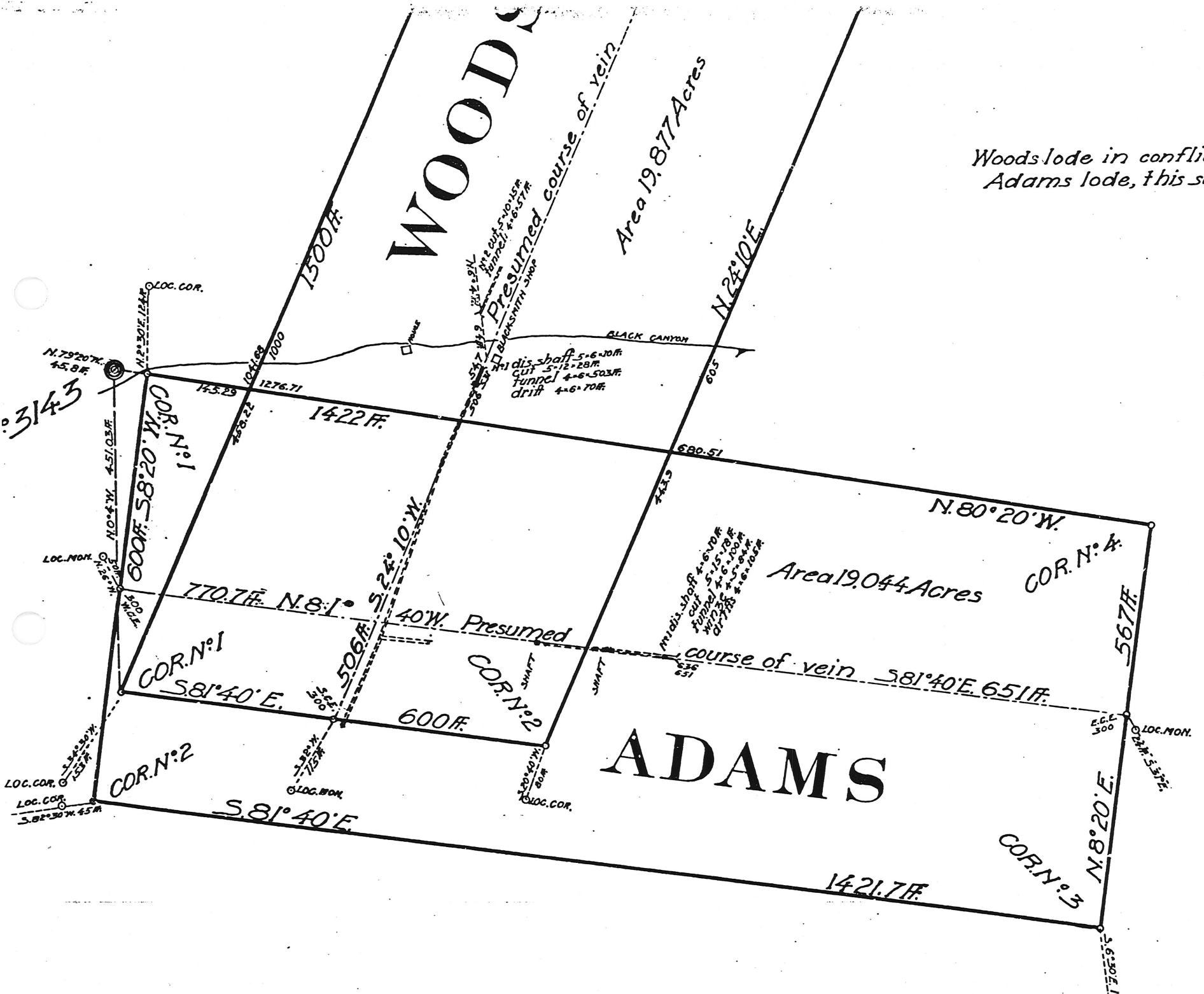
And I further certify that this is a correct plat of said Mining
Claim made in conformity with said original field notes of the
survey thereof, and the same is hereby approved.

U.S. Surveyor General's Office. Frank S. Galle
Phoenix, Arizona. U.S. Surveyor General for
October 8, 1914, Arizona

WOODS

Area 19,877 Acres

Woods lode in conflict with Adams lode, this survey 59.



Copied
Sept. 29, 1914,
A L H

1
Aug 21, 1914

(4-883.)

Mineral Survey No. 3143

Lot No.

..... Arizona Land District.

FIELD NOTES

OF THE SURVEY OF THE MINING CLAIM OF

..... Eureka Gold and Copper Mining Company

KNOWN AS THE

--- WOODS, ADAMS ---

..... Verde Mining District,

..... Yavapai County, Arizona

Section Approx. 31., Township 15 N., Range 3 E. Unsur.

Surveyed under instructions dated August 6, 1914.

by Lloyd C. Gage,
U. S. Deputy Mineral Surveyor.

Claims located See location notices , 1901

Survey commenced August 8, 1914. , 1

Survey completed August 14, 1914. , 1

• 2-100

Address:
H.M. Gibbes, Attorney for claimant,
Jerome, Arizona.

WOODS TRACT.

Beginning at Cor. No. 1.

A porphyry stone 6x10x24 ins. set 12 ins. in the ground with mound of stone, chiseled 1-W-3143.

The location corner bears S.34°30'W. 153 ft.

U.S.M.M. No. 3143 bears N.0°04'W. 451.03 ft.

FEET. Thence S. 81° 40' E.

300. To South Center End, a porphyry stone 6x6x20 ins. set 10 ins. in the ground, with mound of stone, chiseled W-3143 S.C.E.

The location monument bears S.32°W. 115 ft.

600. To Cor. No. 2.

A porphyry stone 8x8x24 ins. set 12 ins. in the ground with mound of stone, chiseled 2-W-3143.

The location corner bears S.20°40'W° 80 ft.

Thence N. 24° 10' E.

443.90 Intersect line 4-1, Adams lode of this survey at N.80°20'W° 680.51 ft from Cor. No. 4.

605. Creek, 1 ft. wide, flows East.

1500. To Cor. No. 3.

A porphyry stone 6x8x24 ins. set 12 ins. in the ground with mound of stone, chiseled 3-W-3143.

The location corner bears S.83°30'E. 149 ft.

Thence N. 81° 40' W.

300. To North Center End, a porphyry stone 5x6x20 ins. set 10 ins. in the ground with mound of stone, chiseled W-3143 N.C.E.

The location monument bears N.43°30'E. 42 ft.

600. To Cor. No. 4.

A porphyry stone 6x10x24 ins. set 12 ins. in the ground with mound of earth and stone, chiseled 4-W-3143.

The location corner bears N.1°E. 58 ft.

WOODS LODGE- continued.
 Thence S. 24° 10' W.
 1000. Creek, 1 ft. wide, flows East.
 1041.68 Intersect line 4-1, Adams lode of this survey at
 N. 80° 20' W. 1276.71 ft. from Cor. No. 4, and S 80° 20' E 1412.9 ft.
 from Cor. No. 1.
 1500. To Cor. No. 1, the place of beginning.

ADAMS

Beginning at Cor. No. 1.
 A porphyry rock in place 2x2 ft., 2 ft. above ground,
 chiseled 1-A-3143.(+) cross.
 A porphyry rock in place 5x6 ft., 4 ft. above ground,
 chiseled with a cross (+) 1-A-3143 B.R., bears S. 8° 20' W.
 29.6 ft.
 A porphyry rock in place 5x50 ft., 6 ft. above ground,
 chiseled with a cross (+) 1-A-3143 B.R., bears N. 8° 20' E.
 27.1 ft.
 The location corner bears N. 2° 30' E. 124 ft.
 U.S.M.M. No. 3143 bears N. 79° 20' W. 45.8 ft.

Thence S. 8° 20' W.

300. To West Center End, a porphyry stone 6x6x20 ins. set
 10 ins. in the ground with mound of stone, chiseled
 A-3143 W.C.E.
 Loc. Mon. brs. N. 26° W. 50 ft.
 600. To Cor. No. 2.
 A porphyry stone 6x10x24 ins. set 12 ins. in the ground
 with mound of stone, chiseled 2-A-3143.
 The location corner bears S. 82° 30' W. 45 ft.

Thence S. 81° 40' E.

1421.7 To Cor. No. 3.
 A porphyry stone 6x13x24 ins. set 12 ins. in the ground
 with mound of stone, chiseled 3-A-3143.
 A porphyry rock in place 5x8 ft., 6 ft. above ground
 chiseled with a cross (+) 3-A-3143 B.R., bears N. 8° 20' E.
 1.5 ft.

FEET.

ADAMS LODE - continued.

The location corner bears S.6°30'E. 149 ft.

Thence N. 8° 20' E.

300. To East Center End, a porphyry stone 6x6x20 ins. set 10 ins. in the ground with mound of stone, chiseled A-3143 E.C.E. The location monument bears S.31°E. 24 ft.

567. To Cor. No. 4. Identical with location corner.

A porphyry rock in place 2x2 ft., 3 ft. above ground, chiseled 4-A-3143.(+) cross.

A porphyry rock in place 2x2 ft., 3 ft. above ground, chiseled with a cross(+) 4-A-3143 B.R., bears N.80°20'W. 5.8 ft.

A porphyry rock in place 4x8 ft., 4 ft. above ground, chiseled with a cross(+) 4-A-3143 B.R., bears S.8°20'W. 65.3 ft/

Thence N. 80° 20' W.

680.51 Intersect line 2-3, Woods lode of this survey at N.24°10'E. 443.90 ft. from Cor. No. 2.

1276.71 Intersect line 4-1, Woods lode of this survey at S.24°10'W. 1041.68 ft. from Cor. No. 4, and N.24°10'E. 453.22 ft. from Cor. No. 1. Line 1-2 said Woods lode is 321°45' E. 600 ft.

1422. To Cor. No. 1, the place of beginning.

Variation at all corners 15° E.

LODE LINES.

As near as can be determined from present developments the veins of the several locations embraced in this claim extend as follows from their respective discovery points:

Woods lode, 506 ft. S.24°10'W., and 994 ft. N.24°10'E.

Adams lode, 651 ft. S.81°40'E., and 770.7 ft. N.81°40'W.

AREA.

Total area, Woods lode - - - - - Acres -19.877

SURVEY No. 3143.

	Acres.
Area in conflict with Adams lode - - -	5.997
Total area Adams lode - - - - -	19.044

All location corners and monuments are mounds of rock 3 ft. high, as described in location certificates. The monuments marking the centers of the side lines on both claims are missing.

LOCATION.

This survey is located in approximate Sec. 31, T.15 N.R.3 E., unsurveyed, Verde Mining District, Prescott National Forest, Yavapai County, Arizona.

EXPENDITURE OF FIVE HUNDRED DOLLARS.

I certify that the value of the labor and improvements made upon, or for the benefit of, each of the locations embraced in said mining claim by the claimant or its grantors is not less than five hundred dollars, and that said improvements consist of:

No. 1. ^{On the Woods lode} The discovery shaft of the Woods lode with, tunnel with out and drift, the discovery shaft being on the lode line 506 ft. from South Center End, Woods lode, 5x6 ft., 10 ft. deep. The cut commences on the lode line 591 ft. from South Center End, Woods lode, 5 ft. wide, 12 ft. deep at face, running S.24°10'W. 28 ft., thence tunnel, 4x6 ft. runs S.24°10'W. 130 ft., thence S.20°50'W. 243 ft., thence S.24°50'W. 130 ft. At 373 ft. from mouth of tunnel is drift 4x6 ft., running S.84°E. 70 ft.

Value \$5730.

No. 2. Tunnel with out. The mouth of out bears from a point on the lode line 547 ft. from South Center End Woods lode, N.6°04'W. 64 ft., 5 ft. wide, 10 ft. deep at face, running N.25°E. 15 ft., thence tunnel, 4x6 ft. runs N.25°E. 57 ft.

Value \$570.

No.
tunnel
being
lode,
line
15 ft
tunnel
mouth
At 40
N.83°
At 84
S.82°
No.
Center
No.
Center
A
on the
N.79°
A
the s
ft. C
ant h
Th
2500.
as de
were
Th

On the Adams lode
 No. 1. The discovery shaft of the Adams lode with, tunnel with out-winze and drifts, the discovery shaft being on the lode line 651 ft. from East Center End Adams lode, 4x6 ft., 10 ft. deep. The cut commences on the lode line 636 ft. from East Center End Adams lode, 5 ft. wide, 15 ft. deep at face, running N.81°40'W. 18 ft., thence tunnel, 4x6 ft. runs N.82°15'W. 100 ft. At 80 ft. from mouth of tunnel is a winze 4x5 ft., vertical, 84 ft. deep. At 40 ft. below collar of winze is drift 4x6 ft. running N.83°W. 85 ft., and drift 4x6 ft. running S.82°E. 10 ft. At 84 ft. below collar of winze is drift 4x6 ft. running S.82°E. 10 ft.

Value \$2890.

~~No. 2.~~ A shaft, on the lode line 730 ft. from East Center End, Adams lode. 3x4 ft., 5 ft. deep, not claimed.

~~No. 3.~~ A shaft, on the lode line 830 ft. from East Center End, Adams lode, 3x4 ft., 8 ft. deep, not claimed.

OTHER IMPROVEMENTS.

A house, the N. E. corner of which bears from a point on the lode line 547 ft. from South Center End Woods lode, N.79°W. 110 ft., 10x12 ft. Course of long sides N.80°E.

A blacksmith shop, the S.W. corner of which bears from the same point on the lode line, S.65°50'E. 7 ft., 10x12 ft. Course of long sides N.24°10'E. Both belong to claimant herein.

INSTRUMENT.

This survey was made with Buff & Berger transit No. 2500. The courses were deflected from the true meridian as determined by stellar observations. The distances were measured with 100-ft. and 300-ft. steel tapes.

REPORT.

The lode line of each location of this claim was run

8
7
6

SURVEY No. 3143

... directly upon the ground, and the several corners established by means of offsets from the lode line. All tie lines were run either directly upon the ground or by traverses, run upon the ground and submitted in a separate report herewith.

U. S. M. M. No. 3143 is on a porphyry rock in place, 30x50 ft., 10 ft. above ground, chiseled with a cross (+) U.S.M.M. No. 3143, with bearing rocks.

ADJOINING CLAIMS

There are no known adjoining claims.

Lloyd H. Hage
U. S. Mineral Surveyor.

FIELD NOTES

8

U. S. Mineral Monument No. 3143.
Approx. Sec. 31, T. 15 N., R. 3 E., unsurveyed.

Established Aug. 13, 1914.

By Lloyd G. Cage

U. S. Mineral Surveyor.

U. S. Mineral Monument No. 3143.

For U. S. Mineral Monument No. 3143, established for surveys in Approx. T. 15 N., R. 3 E., I chiseled U. S. M. M. No. 3143 with a cross (+) on top of porphyry rock in place, 30x50 ft., 10 ft. above ground, on North or left side of Black Canyon.

A cross (+) on South vertical face of porphyry rock in place, 10x50 ft., 8 ft. above ground, chiseled. U. S. M. M. No. 3143 B. R. bears N. 22°35'E. 9.6 ft.

A cross (+) on top of porphyry rock in place, 30x50 ft., 10 ft. above ground, chiseled U. S. M. M. No. 3143 B. R. bears S. 88°30'W. 10.9 ft.

A cross (+) on East vertical face near top of porphyry boulder in place 8x9 ft., 6 ft. above ground, chiseled U. S. M. M. No. 3143 B. R. bears S. 10° W. 27.1 ft.

Creek in Black Canyon bears South 25 ft., 1 ft. wide, flows East.

Mouth of main Eureka tunnel bears S. 89°14'E. 363 ft.

Two Republics mine bears N. 53° 30' W. 3300 ft.

U.S.L.M. No. 1453 bears approximately N. 10° W. 11,600 ft.

Lloyd G. Cage
U. S. Mineral Surveyor

~~State of Arizona,)
County of Yavapai.)~~

~~Lloyd G. Gage, U. S. Mineral Surveyor, being first duly sworn according to law deposes and says that on the 13th day of August, 1914, he established U. S. Mineral Monument No. 3143 for mineral surveys in T. 15 N., R. 2 E., Yavapai County, Arizona. That the foregoing are the true and original field notes of such survey, establishing said U. S. Mineral Monument No. 3143, and that said monument was established as therein stated.~~

~~Lloyd G. Gage,
U. S. Mineral Surveyor,~~

~~Subscribed and sworn to before me by the said Lloyd G. Gage, U. S. Mineral Surveyor, on the 19th day of August, A. D. 1914.~~

~~N. F. Wykoff,
Notary Public.~~

~~(SEAL)~~

~~My commission expires April 8th, 1916.~~

10
Aug. 21, 1914

State of Arizona, }
County of Yavapai, } SS

Lloyd G. Gage, U. S. Mineral Surveyor,
being first duly sworn according to law deposes and says that on the
13th day of August, 1914, he established U. S. Mineral Monument
No. 3143 for mineral surveys in T. 15 N. R. 3 E., Yavapai County,
Arizona. That the foregoing are the true and original field notes
of such survey, establishing said U. S. Mineral Monument No. 3143,
and that said monument was established as therein stated.

Lloyd G. Gage
U. S. Mineral Surveyor.

Subscribed and sworn to before me by the said
Lloyd G. Gage, U. S. Mineral Surveyor, on this 19th day of
August, A. D. 1914.

N. F. Wykoff
Notary Public.

My Commission Expires April 8th, 1916

....., Flagman.

Subscribed and sworn to by the above-named persons before me this 20th.....

day of August, 1914

N. F. Wykoff
Notary Public

My commission expires April 8th, 1916.

FINAL OATHS FOR SURVEYS.

LIST OF NAMES.

A list of the names of the individuals employed by Lloyd G. Gage
 United States ~~Deputy~~ Mineral Surveyor, to assist in running, measuring, and marking the lines, corners, and
 boundaries described in the foregoing field notes of the survey of the mining claim of
Eureka Gold and Copper Mining Company
 known as the WOODS, ADAMS
 and showing the respective capacities in which they acted.

G. A. Pecharich, Chairman.
G. W. McCaskell, Chairman.
 _____, Axman.
 _____, Flagman.

FINAL OATHS OF ASSISTANTS.

We, G. A. Pecharich and G. W. McCaskell
 and _____, do solemnly swear that we assisted
Lloyd G. Gage, United States ~~Deputy~~ Mineral Surveyor, in marking the corners and surveying
 the boundaries of the mining claim of Eureka Gold and Copper Mining Company
 known as the WOODS, ADAMS
 represented in the foregoing field notes as having been surveyed by said ~~deputy~~ mineral surveyor and under his
 direction; and that said survey has been in all respects, to the best of our knowledge and belief, faithfully and
 correctly executed, and the corner and boundary monuments established according to law and the instructions
 furnished by the United States Surveyor-General for Arizona

G. A. Pecharich, Chairman.
G. W. McCaskell, Chairman.
 _____, Axman.
 _____, Flagman.

Subscribed and sworn to by the above-named persons before me this 20th

day of August, 1914

G. W. McKee
 Notary Public

(4-686.)

FINAL OATH OF U. S. DEPUTY MINERAL SURVEYOR

I, Lloyd G. Gage, U. S. Deputy Mineral Surveyor, do solemnly swear that, in pursuance of instructions received from the United States Surveyor General for Arizona, dated August 6, 1914, I have, in strict conformity to the laws of the United States, the official regulations and instructions thereunder, and the instructions of said Surveyor General, faithfully and correctly executed the survey of the Mining Claim of Eureka Gold and Copper Mining Company known as the Woods Adams lode claims situate in Verde Mining District, Yavapai County, Arizona, in Section Approx. 31, Township No. 15 N., Range No. 3 E., Unsur. and designated as Survey No. 3143, as represented in the foregoing field notes, which accurately show the boundaries of said mining claim as distinctly marked by monuments on the ground, and described in the attached copy of the location certificate, which was received by me from the Surveyor General with said instructions, and that all the corners of said survey have been established and perpetuated in strict accordance with the law, official regulations and instructions thereunder; and I do further solemnly swear that the foregoing are the true and original field notes of said survey and my report therein, and that the labor expended and improvements made upon said mining claim by claimant or its grantors are as therein fully stated, and that the character, extent, location and itemized value thereof are specified therein with particularity and full detail, and that no portion of said labor or improvements so credited to this claim has been included in the estimate of expenditures upon any other claim.

Lloyd G. Gage
U.S. Deputy Mineral Surveyor.

Subscribed and sworn to by the said Lloyd G. Gage
U.S. Deputy Mineral Surveyor, before me W. F. Wykoff, Notary Public
in and for Yavapai County, Arizona this 19th
day of August, A.D. 1914.

My commission expires April 8th, 1916.

W. F. Wykoff
Notary Public.

"Woods"

Notice of Mining Location.
Lode Claim.

Aug 6-1911

To All Whom It May Concern:

This Mining Claim, the name of which is the Woods Mining Claim, situate on lands belonging to the United States of America, and in which there are valuable mineral deposits, was entered upon and located for the purpose of exploration and purchase by H.C.Gilmore Chas Kenyon W.S.Adams and C.W.Woods the undersigned, on the 8 day of April 1901.

The length of this claim is 1500 feet, and we claim 1500 feet, in a South-erly direction and ___ feet in a ___ direction from the center of the discovery shaft, at which this notice is posted, lengthwise of the claim, together with 300 feet in width of the surface grounds, on each side of the center of said claim. The general course of the lode deposit and pre-mises is from the North to the South.

The claim is situated and located in the Verde Mining District, in Yava-pai County, in the Territory of Arizona, about 1 1/2 Miles in a Easterly di-
Section 1877
rection from Brindle Pup Mine 1 Mile West of the Bartholdi Mine.

The surface boundaries of the claim are marked upon the ground as fol-lows: Beginning at ___ at a point in a ___ direction ___ feet from the dis-covery shaft (at which this notice is posted), being in the center of the North end line of said claim; thence Easterly 300 feet to a Monument being the North East corner of said claim; thence Southerly 750 feet to a Monu-ment at the center of the East side line of said claim; thence Southerly 750 feet to a Monument being at the Southeast corner of said claim; thence Westerly 300 feet to a Monument at the center of the South end of said claim; thence Westerly 300 feet to a Monument, being at the Southwest cor-ner of said claim; thence Northerly 750 feet to a Monument being at the center of the West side line of said claim; thence Northerly 750 feet to a Monument at the Northwest corner of said claim; thence Easterly 300 feet to the place of beginning.

All done under the provisions of Chapter Six, of Title XXXI, of the Revised Statutes of the United States and of an Act of the General Assem-bly of Arizona, entitled "An Act Concerning Mines," approved March 20th, 1895, and amended March 2d, 1899.

Dated and posted on the ground, this 8 day of April 1901.

H.C.Gilmore
Chas Kenyon
W.S.Adams
C.W.Woods

Filed and recorded at request of W.S. Adams May 23rd A.D. 1901.

~~XXXXXX~~ ; at 2:30 o'clock

P.M., Book 59 of Mines pages 38

Records of Yavapai County, Arizona.

{ SEAL }

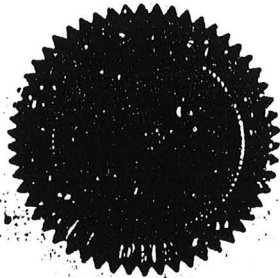
~~XXXXXXXXXX~~
P.J. Farley
County Recorder.

By D.J. Sullivan
Deputy Recorder.

STATE OF ARIZONA, }
COUNTY OF YAVAPAI. } ss.

I, I. S. Colwell, County Recorder in and for the County of Yavapai, State of Arizona, and custodian of the records of such office, do hereby certify that I have compared the foregoing copy with, and that the same is a full, true and correct copy of Notice of Mining Location, Woods Lode Claim,

filed for record on May 23rd A.D. 1901, at 2:30 o'clock P.M. and as the same appears of record in my office in Book 59 of Mines at pages 38 and of the whole thereof.



IN WITNESS WHEREOF, I have hereunto set my hand and affixed my Official Seal this 4th day of August, A. D. 1914.

I. S. Colwell
County Recorder.

"Adams"

Notice of Mining Location.
Lode Claim.

AUG 6- 1914

17

15

To All Whom It May Concern:

This Mining Claim, the name of which is the Adams Mining Claim, situate on lands belonging to the United States of America, and in which there are valuable mineral deposits, was entered upon and located for the purpose of exploration and purchase by H.C.Gilmore Chas Kenyon W.S.Adams and C.W. Woods the undersigned, on the 8 day of April 1901.

The length of this claim is 1500 feet, and we claim 1500 feet, in a North erly direction and ___ feet in a ___ direction from the center of the discov- ery shaft, at which this notice is posted, lengthwise if the claim, together with 300 feet in width of the surface grounds, on each side of the center of said claim. The general course of the lode deposit and premises is from the North to the South.

The claim is situated and located in the Verde Mining District, in Yavapai County, in the Territory of Arizona, about 1½ Miles in a Easterly direction from the Brindle Pup Mine and one Mile West of the Bartholdi Mine.

The surface boundaries of the claim are marked upon the ground as follows:

Beginning at ___ at a point in a ___ direction ___ feet from the dis- covery shaft (at which this notice is posted), being in the center of the South end line of said claim; thence Westerly 300 feet to a Monument being the Southwest corner of said claim; thence Northerly 750 feet to a Monu- ment at the center of the West side line of said claim; thence Northerly 750 feet to a Monument being at the Northwest corner of said claim; thence Easterly 300 feet to a Monument at the center of the North end of said claim; thence Easterly 300 feet to a Monument, being at the Northeast corner of said claim; thence Southerly 750 feet to a Monument being in the center of the East side line of said claim; thence Southerly 750 feet to a Monument at the Southeast corner of said claim; thence Westerly 300 feet to the place of beginning.

All done under the provisions of Chapter Six, of Title XXXII, of the Re- vised Statutes of the United States and of an Act of the General Assembly of Arizona, entitled "An Act Concerning Mines," approved March 20th 1895, and amended March 2d, 1899.

Dated and posted on the ground, this 8 day of April 1901.

H.C.Gilmore
Chas. Kenyon
W.S.Adams
C.W.Woods

Filed and recorded at request of W.S. Adams, May 23rd A.D. 1901.

~~XXXXXX~~ at 2:30 o'clock

P.M., Book 59 of Mines, pages 39

Records of Yavapai County, Arizona.

{ SEAL }

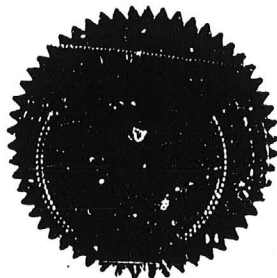
~~XXXXXXXXXXXX~~
P.J. Farley
County Recorder.

By D.J. Sullivan
Deputy Recorder.

STATE OF ARIZONA. }
COUNTY OF YAVAPAI. } ss.

I, L. S. Colwell, County Recorder in and for the County of Yavapai, State of Arizona, and custodian of the records of such office, do hereby certify that I have compared the foregoing copy with, and that the same is a full, true and correct copy of Notice of Mining Location "Adams" Lode Claim,

filed for record on May 23rd A.D. 1901, at 2:30 o'clock P.M. and as the same appears of record in my office in Book 59 of Mines at pages 39 and of the whole thereof.



IN WITNESS WHEREOF, I have hereunto set my hand and affixed my Official Seal this 4th day of August, A. D. 1914.

L. S. Colwell
County Recorder.

(4-688.)

U. S. SURVEYOR GENERAL'S FINAL CERTIFICATE ON
FIELD NOTES.

DEPARTMENT OF THE INTERIOR,
OFFICE OF U. S. SURVEYOR GENERAL,

Phoenix, Arizona.

October 8, 1914.

I, U. S. Surveyor General for District of Arizona,
do hereby certify that the foregoing transcript of the Field Notes, return and approval
of the Survey of the mining claim of

EUREKA GOLD AND COPPER MINING COMPANY

, known as the WOODS, ADAMS

, situate in VERDE

Mining District, YAVAPAI County,

ARIZONA, Approx., in Section 31, Township No. 15 N.,

Range No. 3 E., unsur., and designated as Survey

No. 3143, has been correctly copied from the originals on

file in this office; that said Field Notes furnish such an accurate description of said
mining claim as will, if incorporated into a patent, serve fully to identify the premises,
and that such reference is made therein to natural objects or permanent monuments as
will perpetuate and fix the locus thereof.

And I further certify that five hundred dollars' worth of labor has been expended
or improvements made upon ^{each of} said mining claim ^{by claimant or its} grantors, and
that said improvements consist of 2 shafts, 3 tunnels, 3 cuts, 4 drifts
and 1 winze, total value \$9190.00.

and that no portion of said labor or improvements has been included in the estimate of
expenditures upon any other claim.

I further certify that the plat thereof, filed in the U. S. Land Office at Phoenix,
Arizona, is correct and in conformity with the foregoing Field Notes.

Frank S. Ingalls,

United States Surveyor General for Arizona.

4-887.

SURVEYOR-GENERAL'S CERTIFICATE OF APPROVAL OF FIELD NOTES AND SURVEY OF MINING CLAIM.

Department of the Interior,

Office of U. S. Surveyor-General,

Phoenix, Arizona.

October 8, 1914.

I, U. S. Surveyor-General for District of Arizona,

do hereby certify that the foregoing and hereto attached Field Notes and Return of the Survey of the Mining Claim of

EUREKA GOLD AND COPPER MINING COMPANY

, known as the

WOODS, ADAMS,

situate in VERDE Mining District,

YAVAPAI County, ARIZONA. Approx.

in Section 31, Township No. 15 N., Range No. 3 E., UNSUR.

, designated as Survey No. 3143.

executed by Lloyd G. Cage, U. S. Deputy Mineral

Surveyor, August 8-14, 1914, 190., under my instructions dated

August 6, 1914, 190., have been critically examined and the necessary cor-

rections and explanations made, and the said Field Notes and Return, and the Survey they describe,

are hereby approved. A true copy of the copy of the location certificate filed by the applicant. for

survey is included in the field notes.

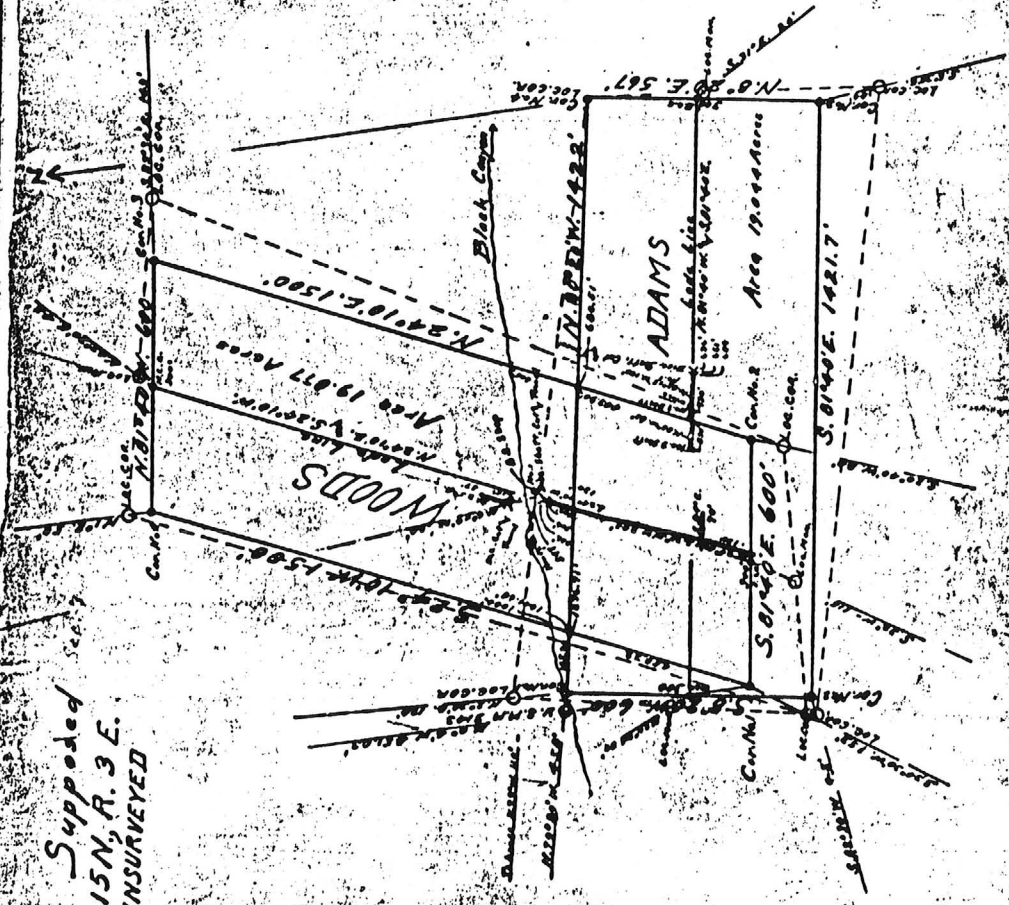
Frank D. Ingalls

U. S. Surveyor-General for ARIZONA.

PRELIMINARY PLAT

SUR. No. 3143
 VERDE MINING DISTRICT
 YAVAPAI CO., ARIZ.
 Surveyed Aug. 9-13, 1914
 B. Lloyd G. Galt
 U.S. Mineral Surveyor

Supposed
 T. 15N, R. 3 E.
 UNSURVEYED

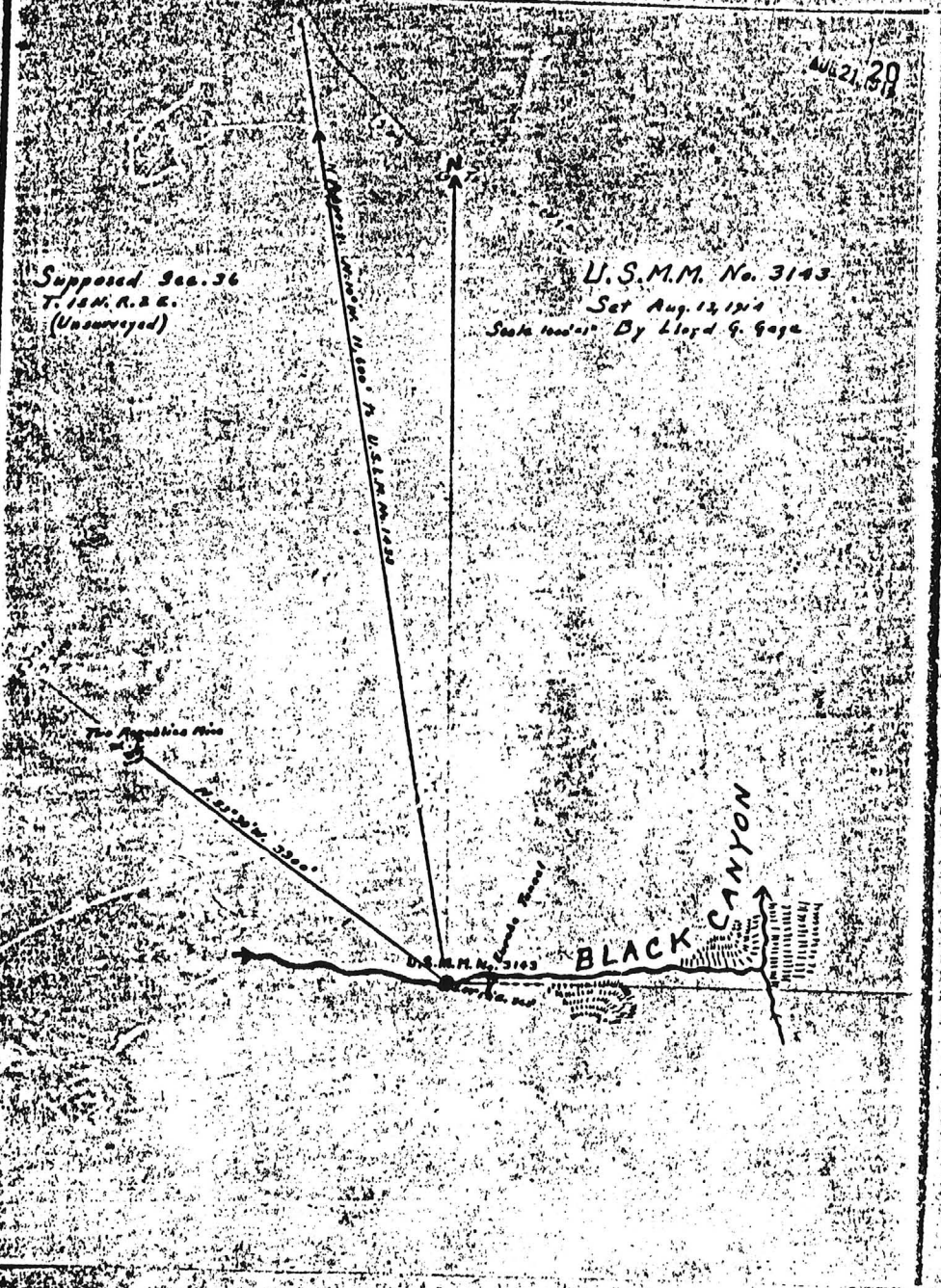


Sy
 T
 (6)

AUG 21 1914

Supposed Sta. 36
T. 12N. R. 2E.
(Unsurveyed)

U.S.M.M. No. 3143
Set Aug. 14 1914
Stake 100'-11" By Lloyd G. Gage



Date Printed: 05/09/96

ARIZONA DEPARTMENT OF MINES AND MINERAL RESOURCES

INFORMATION SUMMARY

Information from: **Ed Matson**

Company:

Address: 360 E. Hillcrest Place
City, State ZIP: Tucson, Arizona 85704
Phone: 520-318-6000

MINE: Adams and Woods

ADMMR Mine File: Adams
County: Yavapai
AzMILS Number: 1390

SUMMARY

Ed Matson, phone 520-318-6000 requested information on the Adams and Woods; two patented claims in Sec. 25, T. 15N., R. 2.5E. They are covered by M.S. 3143 and were patented in 1914 to Eureka Gold and Copper Company. There are purported to have been purchased by the Chief Engineer at the United Verde Mine in the 1940's and are now for sale by his heirs. There is no apparent access to the properties. The property appears to have some development based on information shown on the Mineral Survey. Mr. Matson has promised to send us a copy. They were not in AZMILS, but will now be added.

Ken A. Phillips, Chief Engineer Date: May 7, 1996

100,000 tons blocked out for stoping. Has produced about \$450,000 from shipments to the Denver, Pueblo, San Francisco and Tacoma smelters.

In 1915, unsettled conditions in Mexico necessitated closing down the property.

ESPERANZAS MINING CO.**MEXICO**

Idle. Mine at Estación Symón, San Juan de Guadalupe, Durango, Mex. Joseph Steel, gen. mgr., at last accounts. Cap., \$200,000. Property includes the Montaña de Cobre, Esperanza and other claims.

ESQUER y CA; ALEXANDER.**MEXICO**

Idle. Mine at Baroyeca, Alamos, Sonora, Mex. J. J. Esquer, mgr., at last accounts. Property: the Mexicana, Esperanza and other mines, developed by shafts and tunnels, carries auriferous and argentiferous copper ores.

ESTELLE MINING CO.**CALIFORNIA**

Office: 310 So. Grand Ave., Los Angeles, Calif. Officers: R. C. Troger, pres., sec. and supt., Keeler, Inyo Co., Cal. E. H. Sweetser, v.-p. Adolph Ramish, treas. Inc. 1902 in California. Cap., \$100,000; shares \$1 par; 90,300 shares issued.

Property: 29 claims, 500 acres, including the Morning Star group, shows complex lead-copper ore with gold-silver values. Ore: occurs in fissure veins and replacements in lime-porphry. Development: by a 520' shaft and a 6,300' tunnel. Company plans continuing the tunnel to 7,300' and installation of electric power and larger compressor. Claims to have spent \$24,560 for development work in 1914-1915.

EUREKA COPPER MINES, LTD.**BRITISH COLUMBIA**

Nelson, Kootenay district, B. C. Officers: J. J. Malone, pres.; A. B. Ritchie, v.-p.; L. B. Reynolds, sec.-treas. Inc. March 2, 1906, in British Columbia. Cap., \$250,000; shares 25 cts. par, nonassessable; issued, \$231,250. Property was under bond and lease to B. C. Copper Co., Ltd.

Property: 7 claims, 2 fractional, all except 1 crown granted, approximately 250 acres. Situated 2½ miles from the Canadian Pacific railway, and about 9 miles westerly from Nelson. Claims contain several veins, partly along contacts between limestone and granite, and partly along fracture planes in the granite. One of these veins is developed by shaft, winzes, raises and a 900' crosscut tunnel. Mine is equipped with hoisting and steam-compressor plant. Crosscut adit, driven 1914, failed to disclose any ore and operations were discontinued.

EUREKA GOLD & COPPER MINING CO.**ARIZONA**

Jerome, Yavapai Co., Ariz. Dr. A. J. Murietta, pres.; A. A. Macpherson, sec.-treas. Property: 8 claims, 7 miles south of Jerome, near the Iron King mine, is opened by 2 tunnels, showing a 30' vein with an 8' paystreak carrying bornite and chalcopryrite, with occasional visible gold, but has not developed ore in commercial quantities. Mainly idle, for some years, excepting annual assessment work.

EUREKA HILL MINING CO.**UTAH**

Office: Deseret National Bank Bldg., Salt Lake City, Utah. Mine office: Eureka, Juab Co., Utah. Officers: Moylan C. Fox, pres.; Waldemar Van Cott, v.-p.; Jas. E. Berkey, sec., with Ed. W. Packark, directors.

EUREKA GOLD & COPPER MINING CO. 7-31-62**FPK-Memo**

Dick Blodgett, Cottonwood, Ariz., in office re:
above Co. seeking record of 25 ton shipt. to Humboldt
smelter. See MINES HANDBOOK, Vol. XII.