



## **CONTACT INFORMATION**

Mining Records Curator  
Arizona Geological Survey  
1520 West Adams St.  
Phoenix, AZ 85007  
602-771-1601  
<http://www.azgs.az.gov>  
[inquiries@azgs.az.gov](mailto:inquiries@azgs.az.gov)

The following file is part of the

Arizona Department of Mines and Mineral Resources Mining Collection

## **ACCESS STATEMENT**

These digitized collections are accessible for purposes of education and research. We have indicated what we know about copyright and rights of privacy, publicity, or trademark. Due to the nature of archival collections, we are not always able to identify this information. We are eager to hear from any rights owners, so that we may obtain accurate information. Upon request, we will remove material from public view while we address a rights issue.

## **CONSTRAINTS STATEMENT**

The Arizona Geological Survey does not claim to control all rights for all materials in its collection. These rights include, but are not limited to: copyright, privacy rights, and cultural protection rights. The User hereby assumes all responsibility for obtaining any rights to use the material in excess of "fair use."

The Survey makes no intellectual property claims to the products created by individual authors in the manuscript collections, except when the author deeded those rights to the Survey or when those authors were employed by the State of Arizona and created intellectual products as a function of their official duties. The Survey does maintain property rights to the physical and digital representations of the works.

## **QUALITY STATEMENT**

The Arizona Geological Survey is not responsible for the accuracy of the records, information, or opinions that may be contained in the files. The Survey collects, catalogs, and archives data on mineral properties regardless of its views of the veracity or accuracy of those data.

04/08/88

ARIZONA DEPARTMENT OF MINES AND MINERAL RESOURCES FILE DATA

PRIMARY NAME: A L CLAIMS GROUP

ALTERNATE NAMES:

MOHAVE COUNTY MILS NUMBER: 758

LOCATION: TOWNSHIP 34 N RANGE 7 W SECTION 4 QUARTER  
LATITUDE: N 36DEG 22MIN SEC LONGITUDE: W 113DEG 00MIN SEC  
TOPO MAP NAME: MT. TRUNBULL - 7.5 MIN

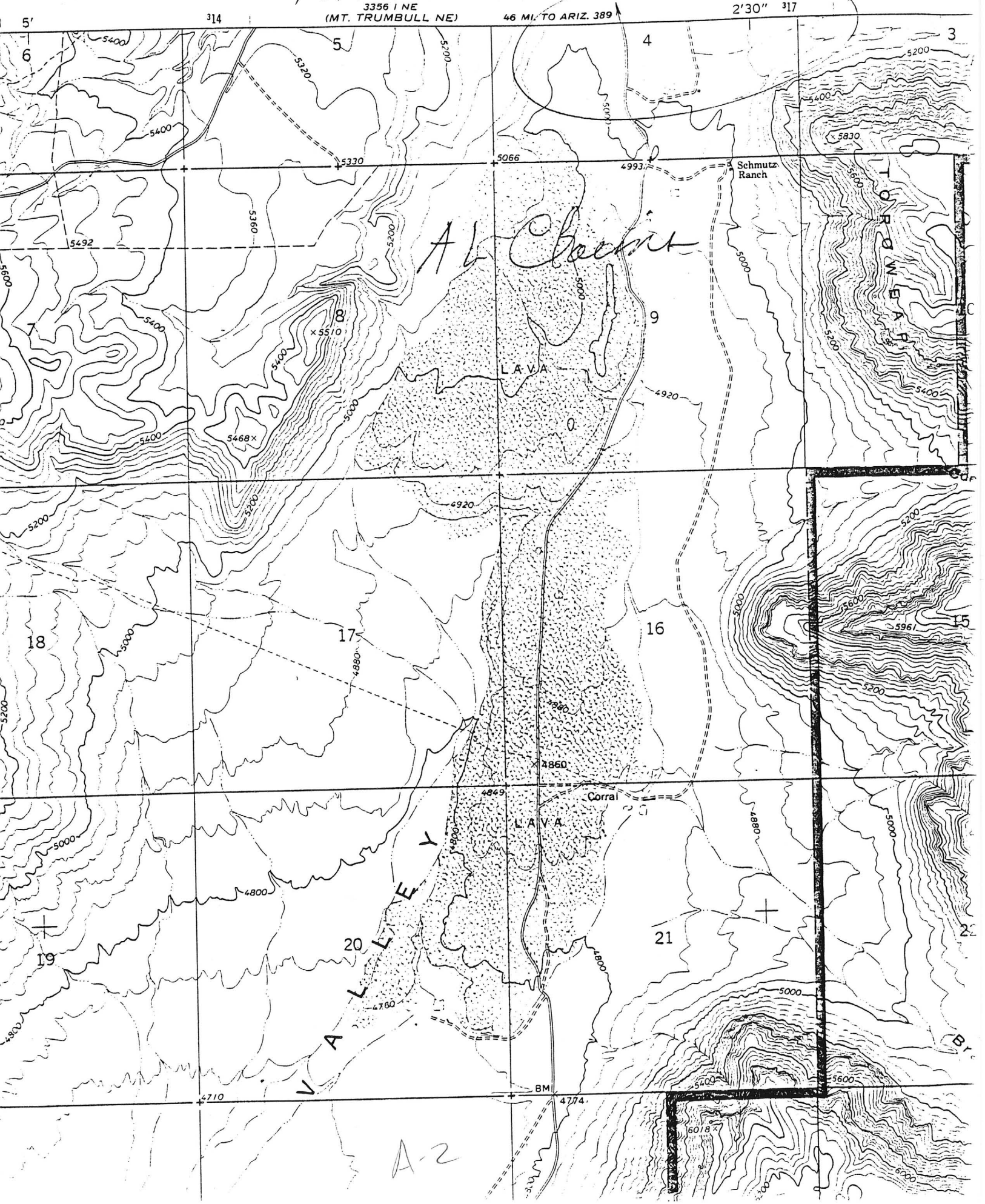
CURRENT STATUS: EXP PROSPECT

COMMODITY:  
URANIUM

BIBLIOGRAPHY:  
ADMMR A L CLAIMS GROUP FILE

A-1

mt Trumbull SE 7.5 min  
+ 34N R 7W Sec 4



3356 1 NE  
(MT. TRUMBULL NE) 46 MI. TO ARIZ. 389

2'30" 317

Al Chacrit

LAVA

Schmutz Ranch

TORREMEYER

LAVA

Corral

VALLEY

BM

60/8

A-2

A L CLAIMS GROUP

MOHAVE COUNTY

MG WR 3/25/88: Discussed the A L Claims controlled by Pathfinder Mines with Mr. Dieter Krewedl. It is located in Sec 4, T34N R7W in Mohave County. As noted in several newspaper articles about a year ago, the A L Group (file) Mohave County is in an extremely environmentally-sensitive area. No work has been done on the claims recently but the group is being maintained by Pathfinder Mines Inc.

-----

B-1